







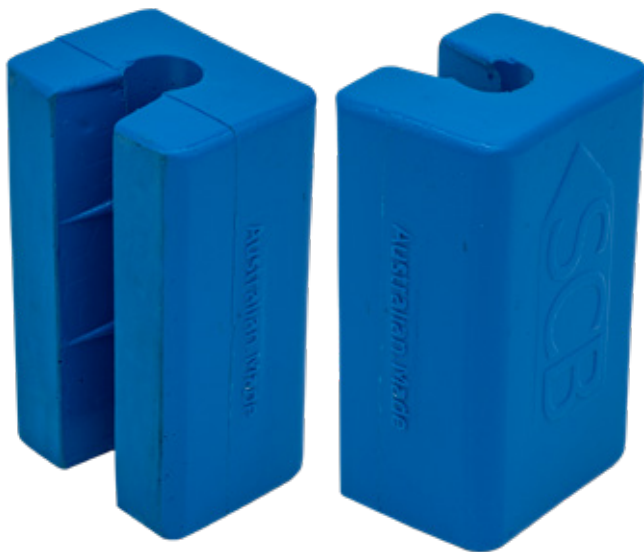
Contents

SCB products	2
SCB electrical accessories	4
Coleman	8
Cyclo.....	10
Norma hose clamps.....	13
Camelbak.....	14
Mares.....	16
Purpleline trailer locks	18
Simrad – Navigation displays.....	20
Simrad – product dimensions	22
NMEA accessories	23
Simrad – echosounders & radio's.....	24
Simrad – charts & mapping.....	25
JL Audio.....	26
Clarion	29
Spark plugs & fuel filters	30
Shelving unit.....	31
Bundles	32

Whether you're into boating, fishing, camping or caravanning, our aim is to deliver great quality products to enhance your lifestyle.

Our products are a combination of the SCB brand, pre-existing, well established brands such as Mares, Camelbak, Coleman, Purpleline trailer lock, as well as co-branded products. These products can also be found in store at participating stockists.

SCB products

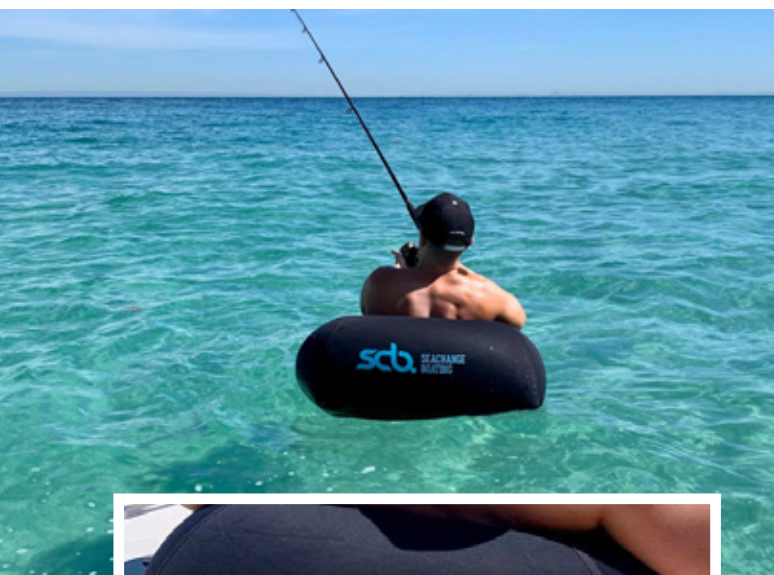


SCB-TRIM SUPPORT (single)
SCB-TRIM SUPPORT 4 PACK

SCB trim support

- Australian Made by a company with over 35 years experience making custom products for large OEM automotive and heavy industry
- Four locking internal tabs to clip over tilt shaft
- Material – polyurethane which is weather resistant
- Can be cut shorter to suit application
- Has been tested up to 200hp 4-stroke outboards. We have done multiple trips, short and long distances (if travelling long distances, would recommend additional trailer to outboard support bracket)
- It out performs the softer EPDM rubber tilt support that the competition has. Polyurethane is slightly harder and less resistant to losing shape under load and will support more weight.

*Picture shown are for illustration purpose only.
Actual product may vary due to product enhancement.*



SCB-BEAN BAG BLACK

SCB bean bag

SCB bean bags are made of quality 3mm neoprene with quality threads, tapes & inks. This product is a 100% Australian made premium product. Beans not included.



SCB-STUBBY

SCB stubby cooler

Our coolers are printed with the latest technology of dye-sublimation. The seams are mause tape sewn, this is a four needle, two looper tape sewn seam. Like our bean bag, the stubby coolers are a 100% Australian made using a quality neoprene material.



SCB-PROP COVER 16D

SCB-PROP COVER 16D 4 PACK

SCB prop cover

The SCB marine prop cover suits up to 16" props.



Revive the look of your boat inside and out with our 7 piece rejuvenation kit. Contains everything you need to detail your boat. Premium quality, boat and yacht detailing products, manufactured and packaged in Australia.

SCB 7 piece bucket is the ultimate kit for rejuvenating and maintaining the interior and exterior of your boat.

PART NUMBER	DESCRIPTION	PER BOX
SCB-BKT-(7)	SCB marine 7 piece rejuvenation kit	64 pallet or individual
SCB-P-AC36-(750)	Marine multipurpose cleaner 750ml	6
SCB-P-AC32-(750)	Marine interior protectant 750ml	6
SCB-P-AC41-(2.5)	Marine wash n wax 2.5L	6
SCB-P-AC166-(750)	Marine fibreglass wax 750ml	6



Transom board

PART NUMBER	DESCRIPTION
SCB-TRANSOM BOARD 9MM	SCB transom board – 9mm thick, 360mm x 360mm white
SCB-TRANSOM BOARD 12MM	SCB transom board – 12mm thick, 360mm x 360mm white
SCB-TRANSOM BOARD 19MM	SCB transom board – 19mm thick, 360mm x 360mm white

SCB electrical accessories



PART NUMBER	DESCRIPTION
SCB-ER21510S	Butt splice joiner – waterproof, red
SCB-ER21511S	Butt splice joiner – waterproof, blue
SCB-ER21512S	Butt splice joiner – waterproof, yellow



PART NUMBER	DESCRIPTION
SCB-ER21527S	5mm ring terminals – waterproof, red
SCB-ER21530S	6mm ring terminals – waterproof, blue
SCB-ER21536S	8mm ring terminals – waterproof, yellow



PART NUMBER	DESCRIPTION
SCB-ER21520S	6.3mm male connector – waterproof, red
SCB-ER21521S	6.3mm male connector – waterproof, blue
SCB-ER21522S	6.3mm male connector – waterproof, yellow



PART NUMBER	DESCRIPTION
SCB-ER21523S	6.3mm female connector – waterproof, red
SCB-ER21524S	6.3mm female connector – waterproof, blue
SCB-ER21525S	6.3mm female connector – waterproof, yellow



PART NUMBER	DESCRIPTION
SCB-ER21540S	Bullet male connector – waterproof, blue
SCB-ER21541S	Bullet female connector – waterproof, blue



PART NUMBER	DESCRIPTION
SCB-ERUBMS	Uninsulated male bullet connector
SCB-ERUBFMS	Uninsulated female bullet connector



PART NUMBER	DESCRIPTION
SCB-ERSL7/3M	Split loom tubing – 7mm x 3m with bonus loom tool
SCB-ERSL10/3M	Split loom tubing – 10mm x 3m with bonus loom tool
SCB-ERSL13/3M	Split loom tubing – 13mm x 3m with bonus loom tool
SCB-ERSL16/3M	Split loom tubing – 16mm x 3m with bonus loom tool



PART NUMBER	DESCRIPTION
SCB-ERSL7/10M	Split loom tubing – 7mm x 10m
SCB-ERSL10/10M	Split loom tubing – 10mm x 10m
SCB-ERSL13/10M	Split loom tubing – 13mm x 10m
SCB-ERSL16/10M	Split loom tubing – 16mm x 10m



PART NUMBER	DESCRIPTION
SCB-ER71202	Battery box large – 330 x 200 x 200mm – includes securing lid strap and buckle
SCB-ER71200	Battery box small – 280 x 195 x 200mm – includes securing lid strap and buckle

SCB electrical accessories



PART NUMBER	DESCRIPTION
SCB-ERBFHWR-HD/S	Blade fuse holder – 5.2mm ² water resistant
SCB-ERBFHWPIS	Blade fuse holder – waterproof orange
SCB-ERBFHWS	Blade fuse holder – 30Amp water resistant standard



PART NUMBER	DESCRIPTION
SCB-ERBT23PS	Battery terminal – light duty, 8mm bolt – positive
SCB-ERBT23NS	Battery terminal – light duty, 8mm bolt – negative
SCB-ERBT23S	Battery terminal – light duty, 8mm bolt – universal



PART NUMBER	DESCRIPTION
SCB-ERBF5S	Standard blade fuses – 5Amp
SCB-ERBF7.5S	Standard blade fuses – 7.5Amp
SCB-ERBF10S	Standard blade fuses – 10Amp
SCB-ERBF15S	Standard blade fuses – 15Amp
SCB-ERBF20S	Standard blade fuses – 20Amp
SCB-ERBF25S	Standard blade fuses – 25Amp



PART NUMBER	DESCRIPTION
SCB-ERBT19PS	Battery terminal – heavy duty 10mm bolt – positive
SCB-ERBT19NS	Battery terminal – heavy duty 10mm bolt – negative



PART NUMBER	DESCRIPTION
SCB-ER743	Trailer socket – 7 pin flat, female
SCB-ER744	Trailer plug – 7 pin flat, male



PART NUMBER	DESCRIPTION
SCB-ERPC8S	8mm cable clamp – stainless steel & rubber
SCB-ERPC10S	10mm cable clamp – stainless steel & rubber
SCB-ERPC13S	13mm cable clamp – stainless steel & rubber
SCB-ERPC16S	16mm cable clamp – stainless steel & rubber

PART NUMBER	DESCRIPTION
SCB-ERPC19S	19mm cable clamp – stainless steel & rubber
SCB-ERPC22S	22mm cable clamp – stainless steel & rubber
SCB-ERPC27S	27mm cable clamp – stainless steel & rubber
SCB-ERPC32S	32mm cable clamp – stainless steel & rubber



PART NUMBER	DESCRIPTION
SCB-ERBMS-6C	Battery master switch – heavy duty, on/off, plastic cover
SCB-ERBMS-2	Dual battery master switch – mounted, rotary style, 12–50v, 100Amp



PART NUMBER	DESCRIPTION
SCB-ER40154	Heat shrink – mini spool 5mm x 2m, black
SCB-ER40155	Heat shrink – mini spool 5mm x 2m, red
SCB-ER40156	Heat shrink – mini spool 7mm x 2m, black
SCB-ER40157	Heat shrink – mini spool 7mm x 2m, red



PART NUMBER	DESCRIPTION
SCB-ER10025	UV treated nylon cable ties – 100 x 2.5mm
SCB-ER16048	UV treated nylon cable ties – 160 x 4.8mm
SCB-ER20035	UV treated nylon cable ties – 200 x 3.6mm
SCB-ER25048	UV treated nylon cable ties – 250 x 4.8mm
SCB-ER30148	UV treated nylon cable ties – 300 X 4.8mm
SCB-ER3801325	UV treated nylon cable ties – 380 x 13.0mm
SCB-ER38275	UV treated nylon cable ties – 370 X 7.6mm

Coleman



COL-1306088

Headlamp CHT4 white

The Coleman CHT4 headlamp comes with a easy-cinch comfort strap (soft, venting polyester fabric), quick access battery door and two AAA batteries (Duracell® brand included), three mode easy-push switch (high/low/red), bright white Nichia® LEDs, three white LEDs for full area viewing and two red for night vision and a pivoting head for directional lighting.



COL-1276218

Picnic blanket (large)

This Coleman Picnic Blanket is the ideal accessory for your outdoor trips! It's made in a comfortable brushed acrylic upper material with PVC backing keeps moisture out and corner peg out points. The blanket folds down for compact easy storage and transport with built in carry strap.

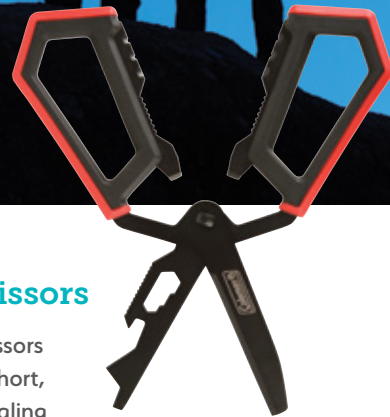
Size: 2.1m x 2.1m.



COL-1453187

Shoreline™ beach shelter

Take shade and privacy to the beach when you pack a Shoreline™ Beach Shelter. With instant setup in about 60 seconds, the front awning provides extra shade, and the privacy door makes clothing changes simple. Sand bags keep the shade in place, and UVGuard™ material offers our highest 50+ UPF protection from the scorching Aussie Sun. The back works as a wall, mesh window or door. On days you can't make it to the beach, take the shade to your kids' games for extra protection when you're sitting on the sidelines.



COL-1400190

Rugged™ multi-use scissors

The Coleman Rugged Multi Use Scissors is 12 tools in one. Never be caught short, whether you are opening cans or scaling fish. Includes scissors, screwdriver, can opener, wrench, fish scaler, nut cracker, jar opener, wire stripper, bottle opener and knife.



COL-1478173

Quickpump™ rechargeable 12v & 240v

Where ever you are, you can use the Coleman Rechargeable QuickPump 12V and 240V to inflate your goods on the go. It comes with inflate and deflate functions, has a high volume/ low pressure pump and a multi-purpose Coleman patented adaptors fit most inflatable products (including Coleman Double Lock valve).



COL-1219482

Illumistick® glowsticks

Handy for backpacking or even home use, the Coleman Disposable glowsticks (Illumistick) is a must for safety and/or fun. Available green, blue, orange and red, these are a fun outdoor light or tent nightlight which the kids will love playing in the dark. All you have to do is bend, snap & shake to get the Illumistick started!

360 sound and light lantern

The Coleman 360° Sound and Light lantern provides 360 degrees of light and is perfect for entertaining family and friends at any outdoor gathering. This lantern includes a rechargeable lithium ion battery and USB port for easy charging. The Bluetooth technology and speaker allow you to light up a large space up to 400 lumens and stream live music at the same time for five hours. With a beam distance of 8 metres radius on high, 5m on medium, and 2m on low. This lantern is made of weather resistant materials (IPX4 rated).



COL-1490746



COL-1400181

Rugged™ multi-tool

The Coleman® Rugged Multi-Tool lets you drastically cut down on how much you need to pack. This compact little tool – the size of a pocket knife – has you covered no matter what situation you encounter outdoors. Includes knife, can opener, wire cutter, Philips head screwdriver, flathead screwdrivers, hook remover, file, bottle opener, fish scaler, inch scale and saw.

COL-1419286

10L classic cooler

The perfect sized companion for a 12 pack and snags. Not too small and not too big to make it a pain to lug around, making it ideal for those day long activities.



COL-1419287

27L classic cooler

This cooler can hold up to 36 cans or 1.25L bottles upright and still have plenty of space to store cooking ingredients, snacks and more. With the insulated lid and body for extended ice retention (of up to two days), this cooler is a fantastic size for trips away, picnics and BBQs.



COL-1497152

45L chest cooler

Keep your food and drinks cold for an extended time, and make the fun last longer, when you bring a Coleman® 45L Chest Cooler. Insulated will keep your items cold for up to three days. Large enough to hold 65 cans, you'll have plenty of space for refreshments for the entire party.



COL-1310869

66L Xtreme® cooler

Holding up to 106 x 375ml cans, the Xtreme Cooler can also be used as an extra seat around the camp. The Coleman Xtreme® Cooler even keeps ice up to 5 days at 32C!





CYC-2931

Rain dance quick detailer

Multi-surface tool for a quick shin – great tool for detailing everyday, touch-ups & in between washing & waxing, formulated for superior shine & to enhance vehicle wax protection. (651ml)



CYC-2701

Rain repel

Cyclo Rain Dance Rain Repel helps improve visibility of your glass windshields by making sure the rain flows off quickly. Rubber safe – will not damage windshield gaskets and other rubber components (104ml)



CYC-C392

Max clean all-purpose cleaner

The best for any dirty job – multi-purpose foaming cleaner boosted with citrus activators, deep-cleaning foaming action, spray on, wipe off.

Applications: vinyl, chrome, fiberglass, aluminum, granite, fabric, appliances, machinery, tools, clothing, and many more. (510g)



CYC-C44B

Max44

Total fuel system cleaner & lost power restorer – 15% increase in fuel economy on average, improves acceleration & starting, synthetic formula mixes with all gasolines. (237ml)



CYC-C572

SOS Spray Off Salt concentrated formula

Concentrate formula for use with SOS applicator. Removes salt deposits, inhibits rust & corrosion, dries without leaving a waxy residue, great for saltwater & freshwater, ideal for flushing marine engines, multi-surface protection. Biodegradable. (946ml)



CYC-C574

SOS Spray Off Salt concentrate applicator

For use when rinsing or flushing, To be used with Cyclo SOS Concentrate Formula (C573), Multiple attachments for any application.

Compatible with all hoses, nozzles and engine flush systems.



CYC-C573

SOS Spray Off Salt concentrated formula

Concentrate formula for use with SOS applicator. Removes salt deposits, inhibits rust & corrosion, dries without leaving a waxy residue, great for saltwater & freshwater, ideal for flushing marine engines, multi-surface protection. Biodegradable. (3.78L)



CYC-9610

No7® scratch remover

Formulated with diminishing abrasives. Safely removes light scratches/swirls, super-fine particles break down from friction to gently buff away any surface blemishes and safe for all finishes, hand or machine uses. (237ml)



CYC-C1INTL

Break Thru® carb clean

Fast gum cutter. A powerful solvent spray removes varnish, carbon & dirt. Safe for oxygen sensors. Applications include carbs, automatic chokes, PCV valves & linkages, fuel injector throttle plates, throttle bodies. (354g)



CYC-C32

Professional strength brake & parts clean – chlorinated formula

One can cleans all 4 brakes – quickest drying & strongest cleaning.

Non-flammable. (510g)



CYC-C34

White grease

2x longer lasting lithium lubricant & stays pliable. Reduces wear & stops squeaks. Repels moisture to protect against rust & corrosion. (326g)



CYC-C87

Break Thru® electronics cleaner

Quick dry formula leaves no residue. Instantly removes oil, grease, dirt & grime. CFC products where lower flashpoint solvents may be used. (312g)



CYC-C121

Battery protector

Extends battery life. Protective red-colour red coating prevents corrosion on terminals & brackets, soft pliable formula flows into cracks & crevices for maximum protection. (312g)



CYC-C177 (500ml)



CYC-C179 (3.78L)

Hand cleaners

Citrus lotion with pumice – no water needed, removes grease, oil, ink, undercoating, pipe dope & more.



CYC-C706

Silicon dielectric grease

Lubricates, seals & protects electrical connections, rust & corrosion protection and locks out moisture, oil, salt & dirt. (89ml)



CYC-C111

Break & parts clean

Original non-chlorinated formula. One can cleans all 4 brakes – quickest drying & strongest cleaning. (397g)



CYC-C920

Threadlocker – blue

Medium strength removable threadlocker – locks, fastens & seals threads, prevents loosening due to vibration, removable with normal hand tools. (6ml)



CYC-C925

Threadlocker – red

High strength permanent threadlocker – locks, fastens & seals threads, prevents loosening due to vibration, disassembly requires extra effort. (6ml)



CYC-C10

Break away

The best at loosening the toughest jobs – penetrate & super lubricant, breaks loose rusted joints & bolts and controls rust, corrosion & squeaks (369g)



CYC-C290 (237ml)



CYC-C292 (946ml)

Fuel stabilizer

Keeps fuel fresh for quick starts, prevents fuel deterioration & gum/varnish build up, no need to drain fuel for storage. Suitable for all 2 & 4 cycle engines.



CYC-C320

Liqui shield

The longest lasting waterproof lubricant. The best prevention against rust & corrosion, does not attract dirt or sling-off making it great for moving parts. (284g)



CYC-C331

Glass clean

100% streakproof formula – safe for window tinting film, all auto, marine, farm, industrial equipment, cuts grease, grime, does not run, contains no ammonia.

Applications: windshields, plastics, fiberglass, plexiglass, lexan, acrylic, chrome, aluminum, stainless steel. (539g)



Advantages:

1. Improved asymmetric housing
 - Even distribution of forces and safe assembly
 2. Screw support
 - Ease of assembly due to the safe guidance of the emerging band end
 3. Material and clamping range stamped on the band
 - Prevents errors
 4. Asymmetric extension
 - Prevents the housing from tilting over when the clamp is tightening
 5. Short housing saddle
 - Even contact pressure
 - Improved efficiency
 6. Smooth or stamped inside of the band
 - Optimal hose protection
- Multi-range hose clamp
 - No chromium (VI) used for coating purposes
 - Clamping ranges in acc. with DIN 3017: 8–12mm to 140–160mm
 - Larger diameters available on request

Applications:

- Joining cooling water lines
- Depressurised and pressurised fuel lines and ventilation systems
- Oil lines
- Joining lines in sanitary applications
- Joining lines in machine building applications
- Lines in the household appliance industry
- Hose lines in the commercial vehicle industries



Made in Germany





CB-1644402001
(True Blue 1L)



CB-1644601001
(Deep Magenta 1L)



CB-1644001001
(Charcoal 1L)



CB-1642001060
(Charcoal 600ml)



CB-1642301060
(Spectra 600ml)



CB-1642301060
(True Blue 600ml)

Eddy+ 1L & 600ml

Flip, bite, and sip even more with the redesigned Eddy® + bottle! Our improved bite valve design delivers 25% more flow. The universal cap is leak-proof when closed and spill-proof when open, features an easy carry handle, and is compatible with Chute® Mag and Hot Cap vessels. Lightweight, durable, and dishwasher safe. BPA, BPS, and BPF free.



CB-1274402040
(Airplane Bandits)



CB-1274413040
(Glitter Rainbows)



CB-1274610040
(Unicorn Party)



CB-1593402140
(T-Rex)



CB-1593406140
(Hip Hippos)

Eddy+ Kids 400ml

Just the right bite: Combining the patented CamelBak Big Bite™ Valve with a stem tube and shut-off valve, this detachable one-piece component is simple for kids to use and simple for parents to clean. **Never spill:** Easy for small fingers to operate. **Safe & easy:** Simplified stem and straw are child-safe yet easy to remove for cleaning. All parts are dishwasher safe. Not for children under 3 years. Stain-resistant and taste-free Tritan™ is 100% Free of BPA and BPS.



CBNEWBLKSTAND

Free with 48 bottles purchased.



CB-1513001001
(Charcoal 1L)



CB-1513501001
(Iris 1L)



CB-1513404001
(Oxford 1L)



CB-1512001075
(Charcoal 750ml)



CB-1512501075
(Iris 750ml)



CB-1512404075
(Oxford 750ml)

Chute Mag 1L & 750ml

The versatile Chute® bottle has been improved to feature a NEW magnetic top that easily stows the cap. Drink freely from the angled spout that provides a high flow of water without sloshing or spilling. This durable and leak-proof favourite is still 100% free of BPA, BPS and BPF and now even better at keeping the cap out of the way for easy, one-handed drinking or pouring.



CB-1517501012
(Iris)



CB-1517005012
(Jet)

Chute mag vacuum insulated 1.2L

The new magnetic top keeps the cap out of the way while you drink. This vacuum-insulated bottle keeps liquids cold for 24 hours (even longer if you add ice), and hot for six. The sturdy, double-walled steel design keeps condensation from collecting on the sides of the bottle, and the powder-coat paint job adds some extra colour.



CB-1872401062
(Lake Blue)



CB-1872601062
(Fiery Red)



CB-1872001062
(Black)

Podium Ice 600ml

Keep your water cold 4x longer! We re-engineered our legendary Podium® Ice™ to be the ultimate insulated cycling bottle, even when temps rise into triple-digits. With unmatched aerogel insulation technology, high flow rate and easy cleanability, the Podium Ice stands second to none. It's 100% free of BPA, BPS and BPF and features improved cage fit and the squeezability.



CB-1900001075
(Black/Lime)

Peak Fitness Chill Essential Pocket 750ml

With double-walled insulation to keep your water cold twice as long. It features a triangular, tapered design for optimized hand fit and standalone stability. As well as a high flow, self-sealing cap, easy-to-clean drink interface, and Clean Cap to keep your nozzle clean, it prioritizes performance and functionality above all else.



CB-1834002060
(Black)



CB-1834502060
(Lilac)

Hot Cap Vacuum Stainless 600ml

An everyday, everywhere water bottle. Constructed in durable 18/8 stainless steel with a sweat-proof powder coat finish, Carry Cap keeps drinks cold for up to 24 hours and hot drinks up to 10 hours with double wall vacuum insulation. The grab-and-go Carry Cap twists to open and is compatible with Eddy®+, Chute® Mag, and Hot Cap vessels. Easy to clean and BPA, BPS, and BPF free. Effortless and easy carry for daily hydration.



MD-481111TBP#
(Octopus – size SML or LXL)

MD-481111TBGN#
(Turtle – size SML or LXL)

MD-481111BBL#
(Puffer fish – size SML or LXL)

Sea Pals set

Designed to give your kids long-lasting, comfortable performance during each dive. Featuring a silicone dive mask and snorkel with an ultra comfortable skirt and purge valve. It's paired up with dive fins with comfortable foot pockets and quick-release buckles. It also comes with a sea life themed backpack, which is lightweight and made from quick dry material.



MD-410759BL# (Size: XS or SML)



MD-410759PK# (Size: XS or SML)



MD-410759AQ# (Size: XS or SML)

X-one & Pirate junior set

Featuring the Mares Pirate dive mask and snorkel, combining an ultra comfortable silicone skirt with the snorkel's anti-splash semi-dry top. Plus it's paired up with the X-One dive fins with a travel-friendly short blade and buckle-free straps. Suitable for children.



MD-481092BLWCL



MD-481092PKWCL



MD-481092AQWCL



MD-481092RPKCL



MD-481092RBLCL

Pirate junior combo set

The Mares Pirate Junior Snorkelling Combo is a junior set that has been sized to fit smaller faces, with a silicone mask seal and snorkel mouthpiece you not only have a comfortable fit but a durable set. The snorkel has a splash guard that protects against water entering the snorkel from a large wave or incidental splashing. Suitable for children.



MD-481093LMBK#
(size S/M, M/L, L/XL)



MD-481093RDBK#
(size S/M, M/L, L/XL)



MD-481093WHBK#
(size S/M, M/L, L/XL)

X-one & Bonito set

A fantastic option for travelling, the Mares X-One & Bonito Set offers premium grade equipment at an affordable price. The premium dual lens black silicone mask, dual colour accent & Mares rapid adjust buckle system for comfort & fit but compact fin, combining channel trust technology & hi-tech adjustable rubber bungee for an ideal fit Superior natural breathing snorkel with preformed curve for comfort

Fluida & Cobia set

This adult snorkeling set is made from tempered glass, 100% silicone, making this extremely good quality. The Cobia mask is super comfortable and has an easily adjustable strap. The snorkel in this set is also made from silicone and has a comfortable mouthpiece. With a purge valve at the bottom to allow water to be blown out and a wash over on the top to minimize water getting in.



MD-480124BK#
(size SML to XL)



MD-480124YL#
(Size: SML to XL)



MD-480124BL#
(Size: SML to XL)



MD-484201BKRY-#
(size 35 to 46)



MD-484201BKRD-#
(size 35 to 46)

Aquashoe mesh

Use these comfortable and lightweight Mares mesh aquashoes on the beach, pool deck, boat or while doing other types of watersports. Each pair is made of EVA and quick-drying micro-mesh so it stays lightweight no matter how soaked your feet get. Best of all the anti-skid rubber protects your feet from rocks and slippery terrain.

Wahoo

This set is designed to give you long-lasting, comfortable performance you can count on each dive. Featuring a silicone dive mask with an ultra comfortable skirt and EZ adjust buckles. It's paired up with the snorkel which has a semi-dry top, sliding keeper, and exhaust valve.



MD-481074BL



MD-481074YL



MD-481074TI



MD-481074BK

Purpleline trailer locks



purpleline®
design...innovate...improve



PL-CSK100

Saracen hitch lock & samurai wheel clamp complete security kit

The new Complete Security Kit is an all-in-one combination of hitch lock and wheel clamp that makes life a whole lot harder for thieves, but a whole lot easier for honest boat owners. It combines the Samurai wheel clamp and Saracen hitch lock in one compact, easy-to-use kit.

Keyed alike for convenience, they come in a slim carry bag that's easy to store when travelling. Both units have Purple Line's tough, 7-pin locking mechanism and rugged metal construction.

Key features:

- Made from high strength steel
- Seven Pin cylinder lock resistant to cutting, picking, drilling and gas freezing
- Anti-copy tubular key for added security



PL-SHL100

Saracen caravan & trailer hitch lock

Developed by Aussie Innovators Purpleline, the FullStop® Saracen Caravan and Trailer Hitch Lock is made from specially hardened high strength steel which is resistant to cutting and drilling.

For added security the Saracen Hitch Lock incorporates a high-security, 7-pin barrel lock, resistant to picking, drilling and gas freezing, with a tubular anti-copy key.

The Hitch Lock is suitable for most caravans, camper trailers, boat trailers and general purpose trailers fitted with an Al-Ko hitch and is designed to secure the vehicle by preventing it from being towed away.

Key features:

- Made from high strength steel
- Seven Pin cylinder lock resistant to cutting, picking, drilling and gas freezing
- Anti-copy tubular key for added security



Purpleline torpedo hitch pin lock

Designed and developed in Australia for use with standard tow hitches and articulating poly block trailer couplings.

Key features:

- Easy fitting high security lock for peace of mind
- Suits class 4 receiver up to 75mm
- Chrome plated finish
- Towing rating 3,500kg
- Give yourself some peace of mind with these easy-fitting high-security lock for any articulating poly block trailer couplings.



PL-THP100



PL-SHL300

Saracen ultra hitch lock

The Saracen Ultra hitch lock suits Australian standard 50mm ball hitches and fits both when HITCHED and UNHITCHED.

Saracen Ultra is made from specially hardened high strength steel which is resistant to cutting and drilling. For maximum security, it incorporates a high-security, 7-pin barrel lock, resistant to picking, drilling and gas freezing.

Saracen Ultra suits any trailer with a standard 50mm ball hitch – boat and work trailers, caravans and camper trailers, horse floats, box trailers, car and motorcycle trailers – any trailer at all.

Key features:

- Can be used when both hitched up or unhitched
- Made from high strength steel
- Seven Pin cylinder lock resistant to cutting, picking, drilling and gas freezing
- Anti-copy tubular key for added security



PL-FPC300

Nemesis wheels clamp

New Model, 'one size fits all' – suitable for on and off road wheels up 17" and tyres up to 275mm cross-section. Now comes with three keys.

Key features:

- The Nemesis wheel lock is made from specially hardened high tensile steel which is resistant to cutting and drilling and incorporates an exclusive high security 7-lever barrel lock, resistant to picking, drilling and gas freezing.
- It is supplied with a handy carry bag to store the unit when not in use.
- Built with composite metals, resistant to cutting, drilling and gas freezing.
- Incorporating a seven-pin anti-pick and anti-drill locking bolt with a tubular anti-copy key.
- Strong, secure and tough, it remains quick and easy to fit.
- Suitable for steel and alloy wheels.
- The Nemesis wheel lock is the perfect highly visible deterrent.



Simrad – Navigation displays



CRUISE SERIES

Everything you need for simple and straightforward GPS navigation is right inside the box – sunlight viewable display with mounting bracket and a sonar transducer. Simrad Cruise can display charts, navigation and sonar in split-screen view, or separately in full screen.

Rotary dial and keypad controls make navigating through menus, creating routes and accessing temperature, speed, depth readings and battery voltage effortless.

Main features

- Cruise confidently with simple menus plus easy-to-use rotary dial and keypad controls
- Always know where you are and where you are going bundled with AUS/NZ Navionics® + mapping card and worldwide basemap, C-MAP® upgrade options
- Track the day's boating activity with Simrad® Triptel™ technology
- Keep important data in view with pre-selected split screens
- CHIRP sonar with excellent automatic depth tracking
- Monitor depth readings, position, battery voltage and other critical boat information

Part no.	Description
000-15346-001	Cruise-5 with 83/200 Transducer bundled with AUS/NZ Navionics®
000-15347-001	Cruise-7 with 83/200 Transducer bundled with AUS/NZ Navionics®
000-15348-001	Cruise-9 with 83/200 Transducer bundled with AUS/NZ Navionics®
000-15067-001	Cruise-5 suncover
000-15068-001	Cruise-7 suncover
000-15069-001	Cruise-9 suncover
000-15071-001	Cruise-7 panel mount kit
000-15072-001	Cruise-9 panel mount kit



SIMRAD®

Go With Confidence

GO SERIES

The Simrad GO chartplotter navigation display is a perfect way to expand the capabilities of sportboats, cruisers, and smaller center consoles. Behind the super-bright display with easy to use touch interface lies a chartplotter with built-in GPS receiver and wireless access to the latest charts and updates. Control your onboard sound system, and choose from an array of built-in sonar technologies: cruise with confidence using ForwardScan™ forward-looking sonar, or find fish like a pro with Broadband Sounder™ CHIRP sonar plus Active Imaging™ Sonar.

Main features

- Easy to use multi-touch interface
- Full-featured chartplotter with the widest available cartography support
- Plan smarter with Triptel™ technology
- Support for Navionics Dock-to-dock Autorouting™* and C-MAP Easy Routing™
- Flush or bracket mount display, widescreen with bright LED backlight
- High-speed 10 Hz GPS receiver
- Built-in Broadband Sounder™, CHIRP sonar, Active Imaging™ or ForwardScan™ sonar support (transducer required)
- Built-in wireless connectivity and NMEA 2000® compatible
- Radar display for Simrad Halo™ dome, and Halo™ open array radar (Excludes GO5)
- Dual microSD card slots (GO9 and GO12 only)

Part no.	Description
000-14870-001	GO7 XSR Active Imaging 3-in-1 with C-MAP MAX N Australia/New Zealand
000-14875-001	GO9 XSE Active Imaging 3-in-1 with C-MAP MAX N Australia/New Zealand
000-14857-001	GO12 XSE Active Imaging 3-in-1 with C-MAP MAX N Australia/New Zealand

7"

9"

12"

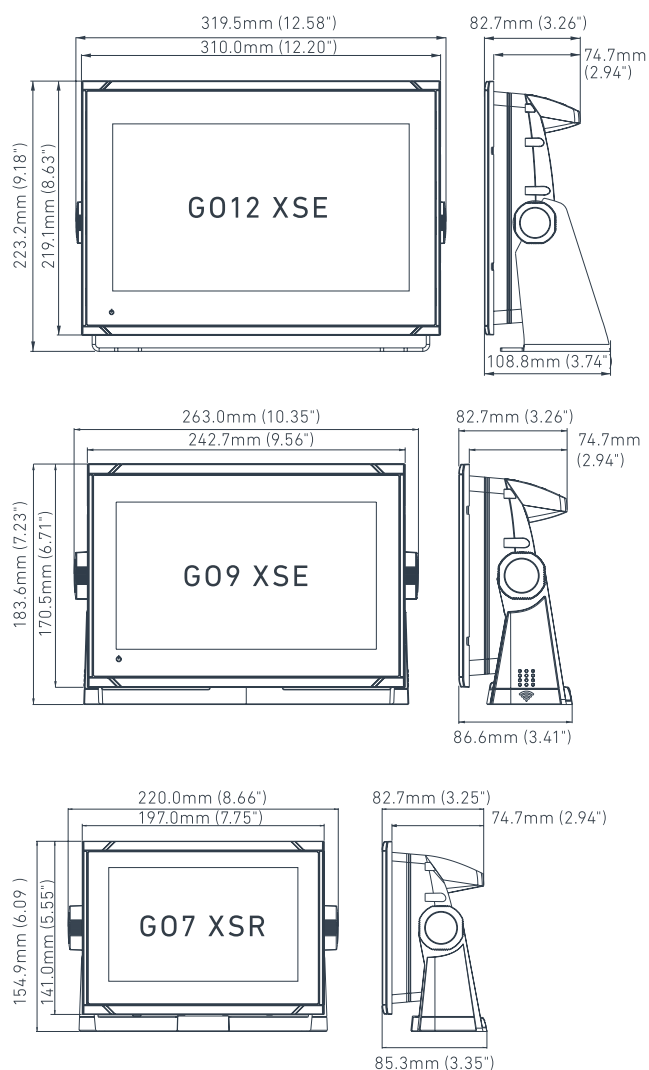


Pinch-to-zoom
with multi-touch

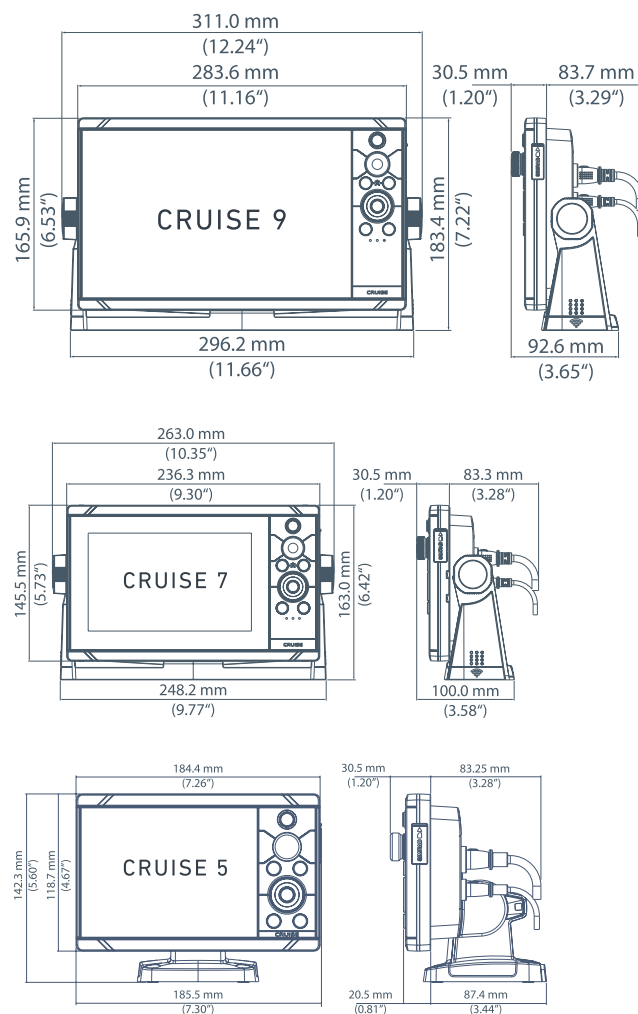
Simrad – product dimensions



GO series



Cruise series





SIM-000-0124-69

NMEA 2000®

Starter kit includes: Network power cable, 0.6m (2') N2K cable, 4.5m (15') N2K cable, 2 x T-connectors, 2 x network terminators



SIM-000-12612-001

NMEA2000 low loss, 4 way joiner

Simrad – echosounders & radio's



Active Imaging™ Sonar

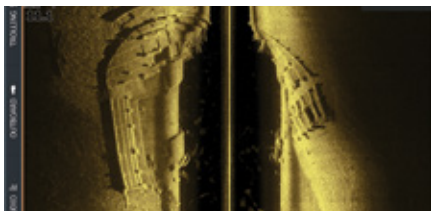
Perfect for pinpointing fish-holding areas like rocks, reef, weedbeds and wrecks.

Active Imaging™ sonar delivers superior clarity and the highest resolution images of fish and structure at a longer range than any other structure imaging technology.

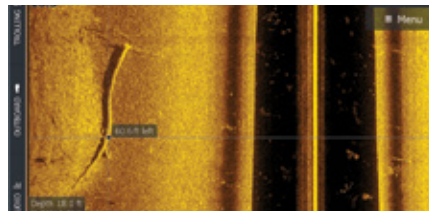
Main features

- All of your sonar – CHIRP, SideScan and DownScan – from a single transducer
- More refined detail and better range than any other imaging technology
- Easier target identification with FishReveal™ Smart Target View
- Supports Medium and High CHIRP (83/200kHz) + SideScan and DownScan (455/800kHz)

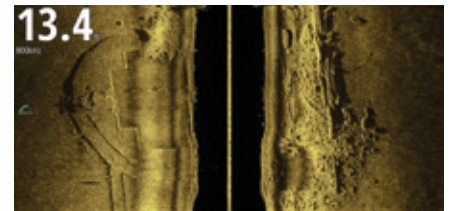
Part no.	Description
000-14489-001	Active Imaging 3-in-1 with 7.6m (25') cable
000-14814-001	Active Imaging 3-in-1 with 1.8m (6') cable



Our clearest, sharpest sonar image ever without sacrificing any range.



Quickly identify fish-holding structure like rocks, reef, weedbeds and wrecks.



Active Imaging™ doesn't sacrifice range for image clarity, allowing you to find the structure faster.

Marine communications



000-14491-001

RS20S

Stay safe and in touch with this dependable Class D DSC approved VHF radio featuring an integrated GPS receiver.

- High-visibility display with inverted night mode
- Intuitive rotary dial & keypad controls
- Four-button fist microphone
- Class D DSC approved

Part no.	Description
000-14055-001	RS20 suncover
000-14059-001	RS20 flush mount kit



000-14470-001

RS40

Stay safe and connected with this VHF marine radio featuring a sleek design with removable fist mic, Class D DSC functionality, and built-in GPS. Comes with suncover and flush mount kit.

- Class D DSC approved VHF radio
- Dual channel AIS receiver
- Integrated GPS receiver
- Connect up to two wireless handsets



AA000224

S/S fold down mount

Navico 1815 VHF antenna mount, s/s, quickfit with 5m (16') cable



AA000358 (1m)

AA000355 (2.5m)

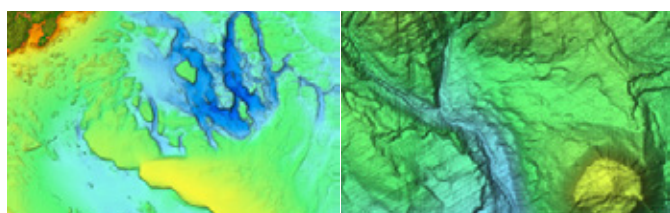
U/Glass VHF antenna

VHF antennas come in two interchangeable parts for installation ease and flexibility. The cable is hardwired to the mount, so the antenna can be removed or replaced whenever necessary without pulling or cutting the cable.



C-MAP

C-MAP serves boaters worldwide, providing cartography products and services for all types of leisure boaters, from fishermen to powerboat owners.



C-MAP REVEAL

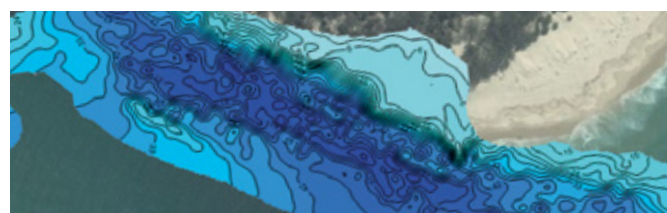
View the sea floor in a whole new light and clearly identify sea floor structure, along with reefs and ledges to find the best fishing and diving spots.

Main features

- Ultra-High Resolution Bathymetric Imagery – Superior identification of the sea floor
- Navigation Data – Containing all C-MAP MAX-N+ vector navigation data
- Superior Overlays – Easily adjust the level of data you see with Genesis Data, Satellite Imagery and High-Resolution Bathymetric Layer



Part no.	Description
M-AU-Y060-MS	MAX-N+ card for AU/NZ



C-MAP GENESIS LIVE

C-MAP Genesis empowers you to create high-definition custom fishing maps with amazing detail and one-foot contours that show key fish-holding areas for greater success on the water.

Main features

- Transform your sonar logs into free custom maps
- View, download & contribute to online social map water bodies across the globe
- Customize maps with 1-, 3-, 5- or 10-foot blueshaded contours
- Upgrade to Genesis Edge to keep maps private

C-MAP MAX-N+

C-MAP MAX-N+ charts provide accurate, up-to-date information, unique features and specialized content to enhance every boating adventure.

Main features

- High Resolution Bathymetric (HRB) charts for coastal areas
- Dynamic tides & currents, and marina info/port services help travelling boaters enjoy smooth boating worldwide



JL AUDIO
MARINE

13831-002 (MM100s-BE)

14710-001 (MM50)

14266-001 (MM80-HR)

MediaMaster®

Specifically engineered for marine and powersports, each model is outfitted with a variety of tuner and connectivity options, plus multi-zone level controls, for maximum listening flexibility and convenience. Every MediaMaster® is NMEA 2000® Certified for direct integration with vessel networks, allowing control functionality from a variety of Marine Multi-Function Displays* (MFD).

Both MM100s-BE and MM50 models feature weatherproof construction (IP66 rated) with oversized controls and customizable, full colour LCD displays. The MM80-HR Hidden Receiver is controlled by your compatible MFD or the MMR-40 Network Controller, while remaining tucked away within your vessel.

M3: subwoofers & speakers



M3-10IB

10-inch subwoofer driver, 175W, 4 ohms. Designed for infinite-baffle operation (no enclosure needed). Select styles available with RGB illumination. Sold individually.



M3-770X

7.7-inch coaxial speaker, 70W, 4 ohms. Select styles available with RGB illumination. Sold in pairs.



M3-650X

6.5-inch coaxial speaker, 60W, 4 ohms. Select styles available with RGB illumination. Sold in pairs.

Description	Classic White	Sports White	with LED	Sports Gunmetal	with LED
6.5inch	000-15448-001	000-15449-001	000-15450-001	000-15451-001	000-15452-001
7.7inch	000-15453-001	000-15454-001	000-15455-001	000-15456-001	000-15457-001
SUB					
10inch	000-15463-001	000-15464-001	000-15465-001	000-15466-001	000-15467-001



M6/M7: subwoofers & speakers



M6/M7 subwoofers

Engineered as the reference standard in marine subwoofer performance, M6 and M7 subwoofers are built with rugged suspension systems and long excursion capabilities to deliver deep, controlled bass performance that enhances the best marine audio systems.

MODELS:

- M6-8IB/M6-8W: 8-inch Marine Subwoofer, 200 W, 4 Ω
- M6-10IB/M6-10W: 10-inch Marine Subwoofer, 250 W, 4 Ω
- M7-12IB: 12-inch Marine Subwoofer, 600 W, 4 Ω

M6-650X coaxial speakers

The M650-CCX is our maximum performance speaker for traditional marine 6.5-inch mounting locations, allowing you to easily upgrade standard speakers on a wide range of boats.

M6-770X coaxial speakers

For an extra sonic edge, consider our oversized, 7.7-inch diameter coaxial M6. It delivers more bass, higher output and better clarity at high volume levels than 6.5-inch speakers, thanks to 20% more sound radiating area and a larger tweeter.

M6-880X coaxial speakers

For those who believe that there is no such thing as "too much of a good thing," our massive 8.8-inch coaxials deliver a giant performance leap, even surpassing the output and low-frequency capabilities of our very capable 7.7-inch models.

MODELS:

- M6-880X: 8.8-inch Marine Coaxial Speakers, 125 W, 4 Ω
- M6-770X: 7.7-inch Marine Coaxial Speakers, 100 W, 4 Ω
- M6-650X: 6.5-inch Marine Coaxial Speakers, 75 W, 4 Ω

Description	Classic White	Sports White	with LED	Sports Gunmetal	with LED	with LED
6.5inch	000-15159-001	000-15160-001	000-15163-001	000-15164-001	000-15161-001	000-15162-001
7.7inch	000-15165-001	000-15166-001	000-15169-001	000-15170-001	000-15167-001	000-15168-001
8.8inch	000-15177-001	000-15178-001	000-15181-001	000-15182-001	000-15179-001	000-15180-001
SUB						
8inch	000-15189-001	000-15190-001	000-15199-001	000-15200-001	000-15197-001	000-15198-001
10inch	000-15147-001	000-15154-001	000-15157-001	000-15158-001	000-15149-001	000-15156-001



ETXv3 and VEX: Enclosed Speakers



ETXv3

ETXv3 is the ultimate tower speaker system, delivering superb sound quality, with strong projected output. Each enclosure is precision-molded with our proprietary marine-grade polymer for outstanding durability in real marine conditions. The mounting systems are sold separately and available to fit a wide range of pipe diameters and specific boat mounts.

MODELS:

- M6-880ETXv3: 8.8-inch (224 mm) Enclosed Tower Coaxial System, 125W, 4 Ω
- M6-770ETXv3: 7.7-inch (196 mm) Enclosed Tower Coaxial System, 100W, 4 Ω
- M3-770ETXv3: 7.7-inch (196 mm) Enclosed Tower Coaxial System, 70W, 4 Ω



VEX™ Pods:

VEX™ pods are ultra-compact enclosed marine speakers, ideal for a multitude of open-air installations. Optimized for use with a high-quality subwoofer system, VEX™ Pods deliver clear, loud mid and high-frequency output in demanding applications. Available in gloss white or textured matte black finish, with or without RGB illumination. Marine-grade polymer construction. Mounting hardware is available to fit a wide range of pipe and tubing diameters (sold separately).

MODELS:

- M6-650VEX: 6.5-inch (165 mm) Enclosed Coaxial System, 75W, 4 Ω
- M3-650VEX: 6.5-inch (165 mm) Enclosed Coaxial System, 60W, 4 Ω

Description	Classic White	with LED	Sports White	with LED	Sports Gunmetal	with LED
VEX						
6.5inch	–	–	000-14762-001	000-14160-001	000-14760-001	000-14761-001
ETXv3 –M3						
7.7inch	000-15458-001	–	000-15459-001	000-15460-001	000-15461-001	000-15462-001
ETXv3 –M6						
7.7inch	000-15171-001	000-15172-001	000-15173-001	000-15174-001	000-15175-001	000-15176-001
8.8inch	000-15183-001	000-15184-001	000-15185-001	000-15186-001	000-15187-001	–

ETXv3-CVR

Gray neoprene, zippered cover protects ETXv3 systems during storage and trailering. Available for 7.7-inch and 8.8-inch ETXv3 enclosed loudspeakers. Sold in pairs.



000-14340-001



000-15341-001

Clarion M505 head unit

Clarion M505 Marine digital receiver, built in Bluetooth with pair of Clarion CMG1622R 6-1/2" Coaxial 2 Way Water Resistant Speakers. The 13-digits 2-line display on the M505 allows numbers and characters to be displayed clearly. Connectors have a protective cover to inhibit corrosion and damage. The built-in multi-band tuner supports reception of radio stations just about anywhere in the world. As well as a Weather Band, so you'll always have the latest weather updates, including automatic reception of emergency weather information. Enjoy Bluetooth audio streaming with improved quality thanks to aptX codec support.



000-15084-001

Clarion CMG1622R 6.5" coaxial speakers

6.5-inch water resistant marine coaxial speaker system, 100 watts maximum power handling, 40 watts RMS, 6.5-inch mica-injection polypropylene cone woofer, 1 1/4 inch cone tweeter, rubber mounting gasket, grilles included and stainless steel mounting hardware included.

000-15075-001

Clarion GR10BT head unit

Clarion's GR10BT is built to withstand the harsh and wet environment of marine usage, by virtue of an IPX5 rated water-resistant front panel and IPX3 rated chassis. Buttons positioned along the rim of the circular face enable quick, stress-free access to functions.

Built-in Bluetooth provides stereo streaming with a wide variety of Bluetooth compatible devices. Equipped with USB pigtail, it's easy to connect a variety of sources. Just connect, and you can even use it to automatically charge your smartphone. The built-in multi-band tuner supports reception of radio stations just about anywhere in the world.



000-15340-001

Clarion kit

Clarion GR10BT Marine Gauge + Clarion CMG1622R 6-1/2" Coaxial 2 Way Water Resistant Speakers Hole Receiver is a full-featured one-piece multimedia source unit offering Bluetooth and USB connectivity, as well as MP3 and WMA support.



000-15081-001

Clarion CM1623RL 6.5" 2-way with led speakers

Designed to fit perfectly in today's modern vessels, Clarion designers were inspired by a submarine propeller to create a breathtaking look for this new line. To fully protect against liquid intrusion, Clarion built watertight connectors right into the speaker basket for both sound and illumination wiring. The CM line has gone through a wide array of environmental testing to deliver class-leading performance, ironclad reliability, and remarkable longevity.

Spark plugs & fuel filters



NGK-XXXX

Spark plugs

Full marine range available – all brands (inboard & outboard)



R-S3213

Replacement fuel filter element for Mercury, Yamaha, Suzuki etc engines

Racor S3213 fuel is an efficient 10 micron fuel filter for use with screw on bowl. Replaces Mercury, Yamaha, Suzuki etc.



R-S3214

Replacement fuel filter element for Johnson/ Evinrude engines

Racor S3214 fuel is an efficient 10 micron fuel filter for use with screw on bowl. Replaces Johnson/Evinrude (OMC/BRPA) with larger 1" centre thread.



R-S3227

Replacement fuel filter element for genuine Racor heads

Racor S3227 fuel is an efficient 10 micron fuel filter for use with genuine Racor heads. Uses 1" centre thread on bowl on bottom.

Shelving unit



Note: The POS-RACK STARTER BAY & POS-RACK ADD ON BAY includes stand base and peg board only, you'll need to purchase the shelves and hooks individually.



POS-RACK HOOK 300MM



POS-RACK SHELF 300MM



POS-RACK SHELF 400MM



Bracket included with 300mm and 400mm shelf

Part No.	Description
POS-RACK STARTER BAY	SCB Display Rack 914W x 1800H x 450D
POS-RACK ADD ON BAY	SCB Display Rack Extension 914W x 1800H x 450D
POS-RACK HOOK 300MM	SCB Display Rack Pegboard Hook 6x300mm & Label Holder 26x80mm
POS-RACK SHELF 300MM	SCB Display Rack Shelf 300mm Wide & 2 Brackets
POS-RACK SHELF 400MM	SCB Display Rack Shelf 400mm Wide & 2 Brackets
POS-RACK TOP SIGN HOLDER	SCB Display Rack Top Sign Holder

Bundles



SCB-mixed kit

Mixed kit

Description	Qty
Detail bucket	2
Trim Support 4 pack	1
Complete security kit	1
Nemesis wheel clamp	1
Saracen hitch lock	1
Torpedo locking hitch pin	3
Saracen ultra	1
Wahoo Combo Blue	2
Wahoo Combo Yellow	2
Wahoo Combo Titanium	2
Wahoo Combo Black	2
Rugged™ multi-tool	3
Marine multi purpose cleaner (750ml)	3
Marine Wash n Wax (2.5L)	2
Marine Fibreglass Wax (750ml)	3



SCB-maintenance kit

Maintenance kit

Description	Qty
Norma clamp board	1
Detail bucket	3
Trim Support 4 pack	1
No. 7 Scratch Remover (237ml)	2
Carb Clean (354g)	2
Professional Strength Brake & Parts Clean (510g)	2
White Grease (326g)	2
Quick Dry Electronic Contact Cleaner (312g)	2
Battery Protector (312g)	2
Citrus Hand Cleaners With Pumice (500ml + 3.78L)	2ea
Silicon DiElectric Grease (89ml)	2
Threadlocker – Blue & Red (6ml)	2ea
Break & Parts Clean (397g)	2
Break Away (369g)	2
Fuel Stabilizer (237ml + 946ml)	2ea
Glass Clean (539g)	2
Liqui Shield (284g)	2
Max Clean All-Purpose Cleaner	2
Max44 (237ml)	2
Rain Dance Quick Detailer (651ml)	2
Rain Repel (104ml)	2
SOS Spray Off Salt (946ml+ 3.78L)	2ea
SOS Spray Off Salt Concentrate Applicator	2



SCB-boating kit

Boating kit

Description	Qty
Torpedo Locking Hitch Pin	3
Saracen Hitch Lock	2
Saracen Ultra	1
SCB Detail bucket	3
Marine Multi Purpose Cleaner	3
Marine Interior Protectant	3
Marine Wash N (Wax 2.5l)	3
Marine Fibreglass Wax (750ml)	3
SCB Trim Support	1
SOS Spray Off Salt Applicator	3
SOS Spray Off Salt (946ml)	3
Fuel Stabilizer (237ml)	4
10L Classic Cooler	1
45L Chest Cooler	1
Rugged™ Multi-Tool	3
Rugged™ Multi-Use Scissors	3
Aquashoe Mesh Blue (35-46)	2ea



SCB-outdoor kit

Outdoor kit

Description	Qty
SCB bean bag	1
45L chest cooler	1
66L Xtreme® cooler	1
360 Sound and Light lantern	2
Headlamp CHT4 White	4
Shoreline™ beach shelter	1
Picnic blanket	1
Rugged™ multi-use scissors	4
Rugged™ multi-tool	4
Eddy+ 1L – True Blue + Deep Magenta	3ea
Hot Cap Vacuum Stainless 600ml – Black + Lilac	3ea
Chute Mag Vacuum Insulated 1.2L – Jet	2
Eddy Kids 400ml – T-Rex + Unicorn Party	3ea



SCB-mares kit

Mares kit

Description	Qty
Sea Pals Set Octopus (S+LXL)	1ea
Sea Pals Set Turtle (S+LXL)	1ea
Sea Pals Set Puffer Fish (S+LXL)	1ea
Aquashoe Mesh Blue (35-46)	2ea
Aquashoe Mesh Red (35-46)	2ea
X-One & Pirate Set AQ (XS+S)	2ea
X-One & Pirate Set PK (XS+S)	1ea
Fluida & Cobia Set BLK (S-XL)	1ea
X-One & Bonito Set White/Black (S/M-L/XL)	1ea
Wahoo Combo Blue	2
Wahoo Combo Yellow	2
Wahoo Combo Titanium	2
Wahoo Combo Black	2

